

# SPAR

## PROPERTY SURVEILLANCE. AUTONOMOUS PATROL.




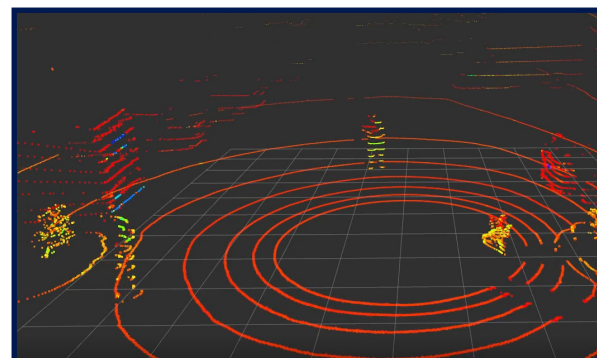
## STANDARD APPLICATIONS

 **NOTIFY YOUR SECURITY**  
Automatically notify on-site guards and the main operator if any unusual activity is detected.

 **360° HD MONITORING**  
A powerful suite of HD cameras allow our security robots to monitor the surrounding environment and remain alert!

 **DAY/NIGHT PATROLS**  
Our camera systems can be equipped with infrared (IR) and night vision, making night time patrols a breeze.


 **CREATE & EDIT PATROL ROUTES**  
Set regular patrol routes to follow. Add/Delete waypoints to your routes and set random routes to break routine!



## AVAILABLE APPLICATIONS

 **PERSON RECOGNITION**  
Utilizing a combination of neural networks and advanced algorithms, security robots can learn how to recognize trespassers.

 **TWO WAY BROADCAST**  
Allow your operators to communicate through the robot. Deter trespassers or criminals with verbal warnings!

 **IDENTIFY LICENSE & VEHICLES**  
Patrol for vehicles in unauthorized areas. Image recognition can allow for license identification and recording.



## FEATURES

- Six wheel drive design for all-terrain environments.
- Hinged lid for easy access to internal compartment.
- 1.5 inch rails constructed from extruded aluminum and design for modular mounting options.
- Motor encoders for improved velocity control.
- 360° mast-mounted PTZ camera with IR capabilities.
- Automatic obstacle detection and avoidance.
- Skid guard to protect batteries and motors.
- Designed for heavy-duty use, these robots can be set up to handle indoor and/or outdoor patrols.
- Powerful transmitters and receivers allow this robot to operate over a large range. WiFi, 4G, and 5G radios are also available.

## TECHNICAL SPECIFICATIONS

### DIMENSIONS AND FRAME

<b>Dimensions (L x W x H)</b>	41 x 26 x 46 in (height includes camera mast)
<b>Weight</b>	216 lbs
<b>Ground Clearance</b>	4.75 in
<b>Chassis</b>	Steel with aluminum enclosure
<b>Payload Capacity</b>	Approximately 250 lbs
<b>Wheels</b>	13-inch All-Terrain Tires

### SPEED AND DRIVE

<b>Average Speed</b>	3 MPH
<b>Axle Mount</b>	6WD Direct Mount (17mm motor shafts)
<b>Drive Method</b>	Direct Drive

### MOTORS

<b>Quantity</b>	6
<b>Rated Power</b>	250W (1500W total)
<b>Output Speed</b>	75 RPM
<b>Rated Voltage</b>	24V
<b>Motor Length</b>	80mm
<b>Motor Diameter</b>	102mm
<b>Shaft Size</b>	17mm (with keyway)
<b>Weight</b>	6 lbs 13 oz
<b>Encoders</b>	Included for velocity control

### BATTERIES AND POWER

<b>Battery Type</b>	LiFePO4 42Ah
<b>Quantity</b>	2 12.8V (wired in series)
<b>Breaker Switch</b>	100 amp

